

EXspect 230 NIR compact sensor



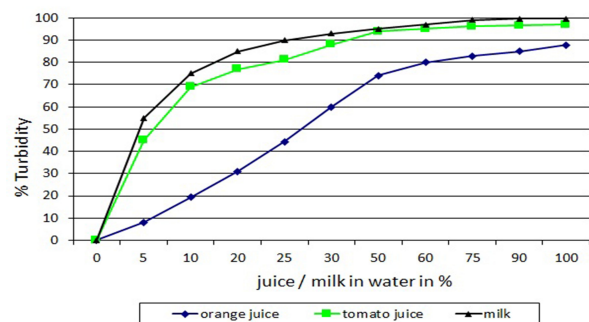
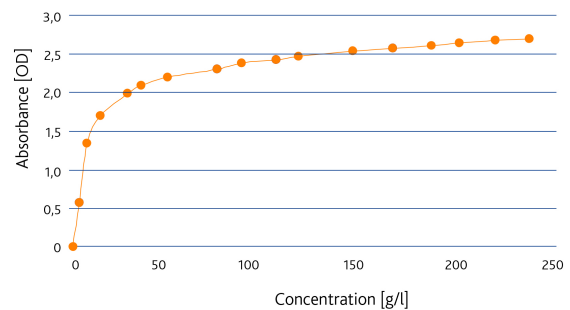
- › Compact design with integrated transmitter
- › Robust Sapphire windows SIP/CIP-capable
- › Hygienic design, no elastomer sealings
- › LED light source guarantees long-lived and reliable signal
- › Integrated contact and analogue output
- › Easy set up functionality

EXspect 230 is a high precisely compact NIR sensor monitoring production processes in the food and pharmaceutical industry as well as in many ranges of process and chemical applications. The measured value is indicated in 0 ... 100%

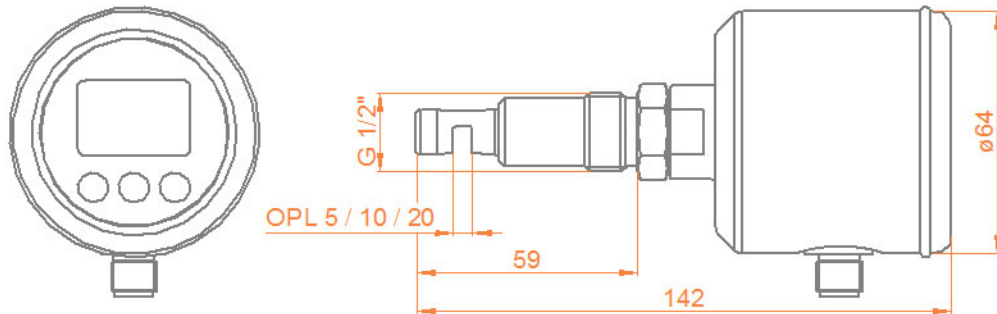
Specifications

Measuring range	0-100%
Wave length	880 nm
Light source	LED
Optical path length	5, 10, or 20 mm
Material	Stainless steel 1.4435 (316L)
Surface	electro polished <Ra 0,37µm
Window	Sapphire
Power supply	24VDC
Output	4...20mA
Contact	NC / NO 150mA
Input contact	optical zero
Cable connection	M12 Connector, 5 - pins
Cable length	2m, 5m or 10m
Process connection	G ½" for weld in socket
Process temperature	0...90 °C, 140 °C max. for 2 h (SIP – cycle)
Process pressure	max. 10 bar (150 psig) @ 60 °C

Typical Measurements



EXspect 230 NIR compact sensor



Ordercode

Code	Material	Delivery
4435	Stainless steel 1.4435 (316L)	3 weeks

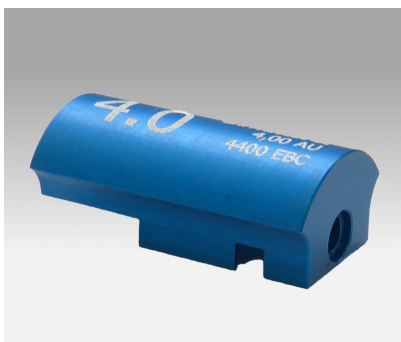
Code	Optical path length	Delivery
05	5mm	3 weeks
10	10mm	3 weeks
20	20mm	3 weeks

Code	Process Connection	Delivery
G12	Thread G1/2" for weld-in socket	3 weeks

Code	Electrical connection	Delivery
M12	M12 plug, 5-pin	3 weeks

Code	Display	Delivery
1	with integrated display	3 weeks
0	without display	3 weeks

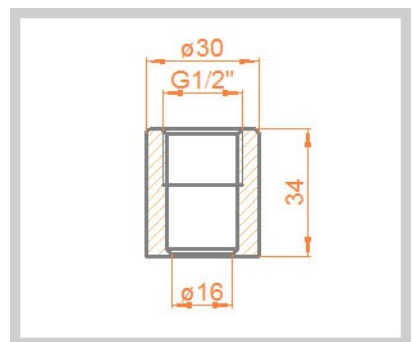
Accessories



Optical reference filter to vary or calibrate EXcell- or EXspect sensors



EXcap 110 - set of optical reference filters



Welding socket 2-087-33-003