

EXspect 240 NIR immersion sensor for holders



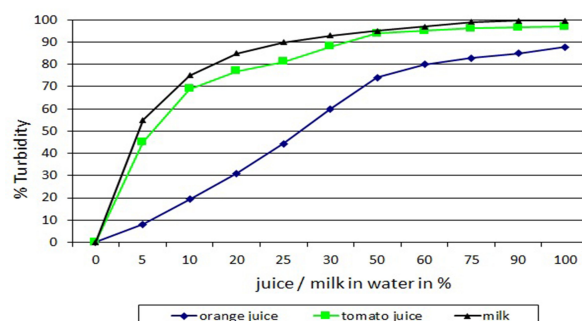
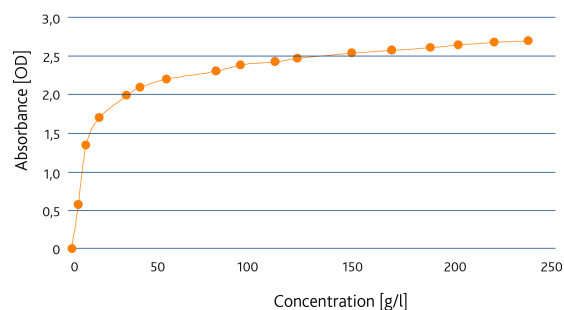
- » Compact design with integrated transmitter
- » Robust Sapphire windows SIP/CIP-capable
- » Hygienic design
- » LED light source guarantees long-lived and stable signal
- » Integrated contact and analogue output
- » Easy tunable
- » Capable of being adapted with retractable holders for automatic cleaning

EXspect 240 is a high precisely compact NIR immersion sensor monitoring production processes in the food and pharmaceutical industry as well as in many ranges of process and chemistry applications

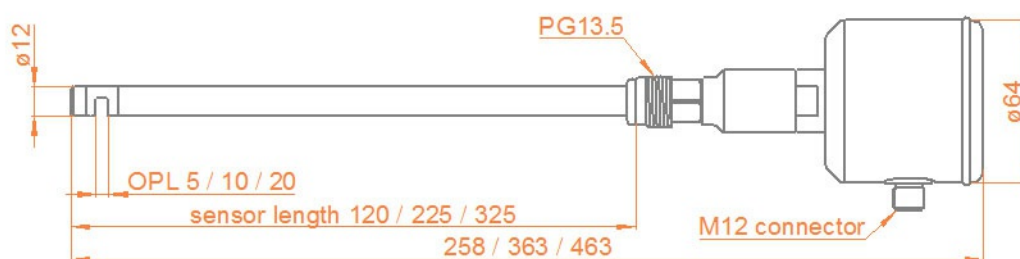
Specifications

Measuring range	0-100%
Wave length	880 nm
Light source	LED
Optical path length	5, 10, or 20 mm
Material	Stainless steel 1.4435 (316L)
Surface	electro polished <Ra 0,37µm
Windows	Sapphire
Power supply	24VDC
Analogue output	4...20mA
Contact	NC / NO 150mA
Input contact	optical zero
Cable connection	M12 Connector, 5 - pins
Cable length	2m, 5m or 10m
Process connection	PG 13,5 Thread
Process temperature	0...90 °C, 140 °C max. for 2 h (SIP – cycle)
Process pressure	max. 10 bar (150 psig) @ 60 °C

Typical Measurements



EXspect 240 NIR immersion sensor for holders



Ordercode

Code	Material	Delivery
4435	Stainless steel 1.4435 (316L)	3 weeks

Code	Sensor length	Delivery
120	120mm	3 weeks
225	225mm	3 weeks
325	325mm	3 weeks

Code	Optical path length	Delivery
05	5mm	3 weeks
10	10mm	3 weeks
20	20mm	3 weeks

Code	Process Connection	Delivery
PG1	Thread PG 13.5	3 weeks

Code	Electrical connection	Delivery
M12	M12 plug, 5-pin	3 weeks

Code	Display	Delivery
1	with integrated display	3 weeks
0	without display	3 weeks

Accessories



Optical reference filter to verify or calibrate
EXcell- or EXspect sensors



EXcap 110 - set of optical reference filters



EXspect 240/260 along with retractable holder
EXtract 810