

EXspect 250 NIR Turbidity Sensor 180°



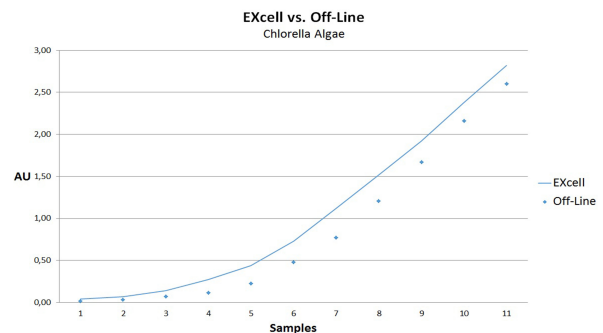
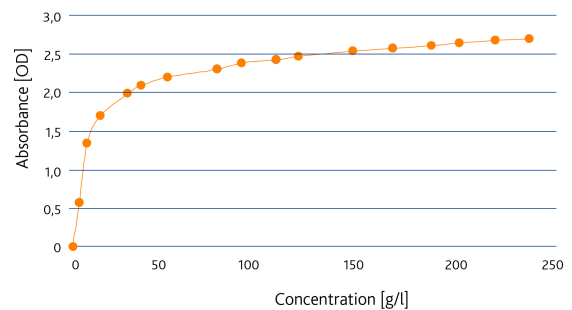
- » EBC / FAU / mg/l or AU values are displayed
- » Compact design with integrated transmitter
- » Robust Sapphire windows SIP/CIP-capable
- » Hygienic design, G1/2"-process connection sealed to suitable welding socket free of elastomers
- » LED light source guarantees long-lived and stable signal
- » analogue output 0...20mA and limit switch
- » Easy set up

EXspect 250 is a high precisely compact NIR turbidity sensor monitoring production processes in the food and pharmaceutical industry, in breweries as well as in many ranges of process and chemical applications

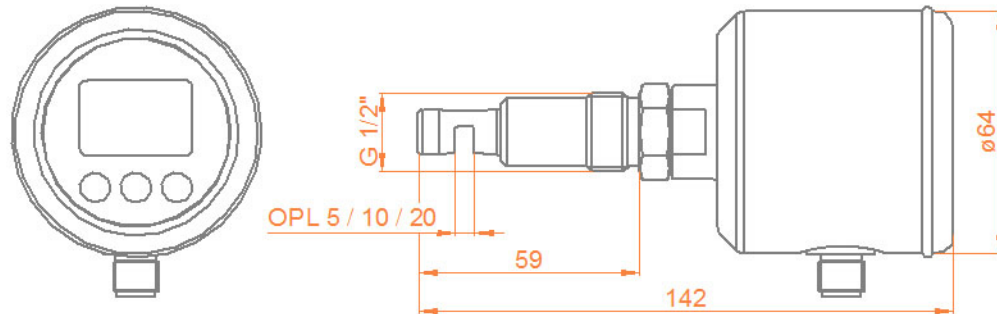
Specifications

Measuring range	0...3AU, 0...6OD 0...3250EBC, 0...13000FAU
Wave length	880 nm
Light source	LED
Optical path length	5mm
Material	stainless steel 1.4435 (316L)
Surface	electro-polished < Ra 0,37µm
Windows	Sapphire
Power supply	24VDC
Analogue output	4...20mA
Switching output	NO or NC 150mA
Cable connection	M12 plug, 5-pin
Cable length	2m, 5m oder 10m
Process connection	G 1/2" for welding socket
Process temperature	0...90 °C, 140 °C max. 2h. (SIP-cycle)
Process presure	max. 10 bar (150 psig) @ 60 °C

Typical Measurements



EXspect 250 NIR Turbidity Sensor 180°



Ordercode

Code	Material	Delivery
4435	Stainless steel 1.4435 (316L)	2 weeks

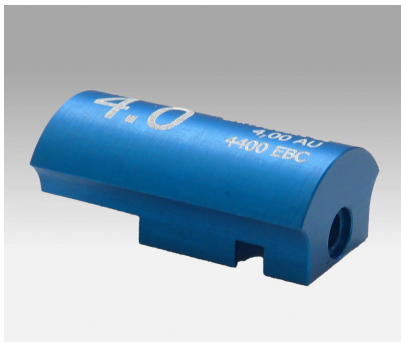
Code	Optical path length	Delivery
05	5mm	2 weeks

Code	Process Connection	Delivery
G12	Thread G1/2" for weld-in socket	2 weeks
I25	Ingold DN25 G1 1/4" o-ring position 25mm	8 weeks

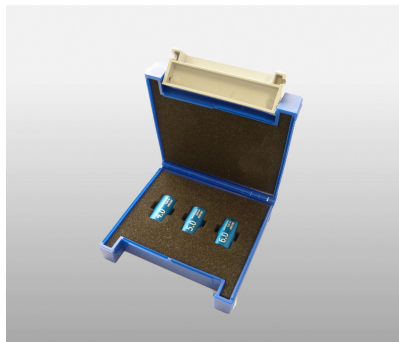
Code	Electrical connection	Delivery
M12	M12 plug, 5-pin	2 weeks

Code	Display	Delivery
1	with integrated display	2 weeks
0	without display	2 weeks

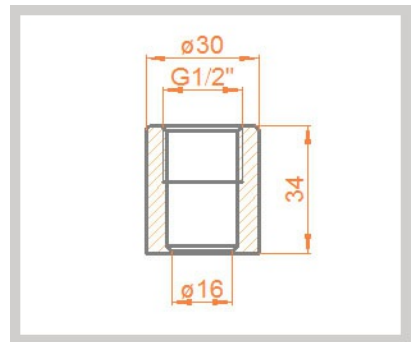
Accessories



Optical reference filter to verify or calibrate EXcell- or EXspect sensors



EXcap 110 - set of optical reference filters



Welding socket 2-087-33-003