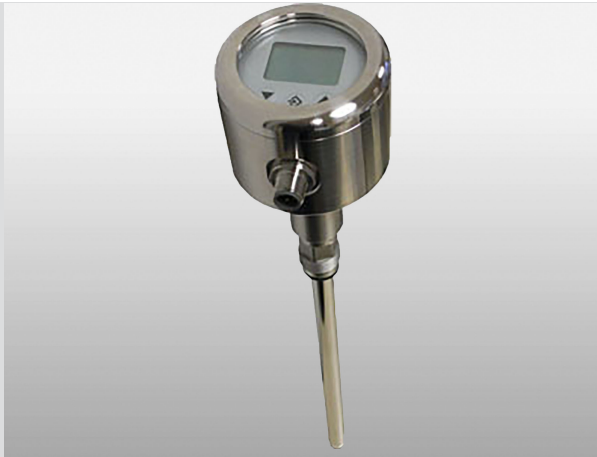


EXspect 260 NIR Turbidity Sensor 180° for holders



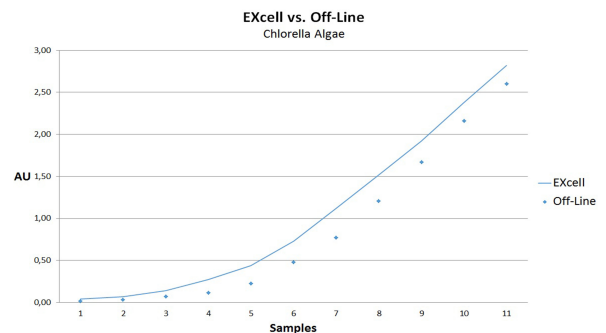
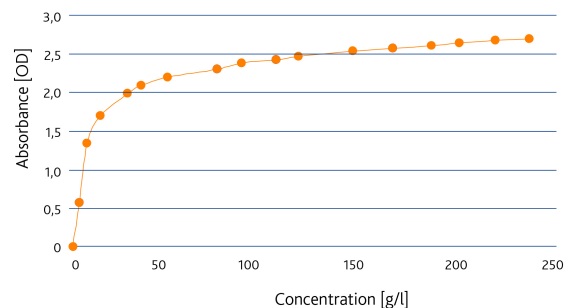
- › EBC / FAU / mg/l / AU or OD values are displayed
- › Compact design with integrated transmitter
- › Robust Sapphire windows SIP/CIP-capable
- › Hygienic design
- › LED light source guarantees long-lived and stable signal
- › Integrated contact and analogue output
- › Easy set up

EXspect 260 is a high precisely compact NIR immersion sensor monitoring turbidity or absorption for production processes in the food and pharmaceutical industry as well as in many ranges of process and chemistry applications

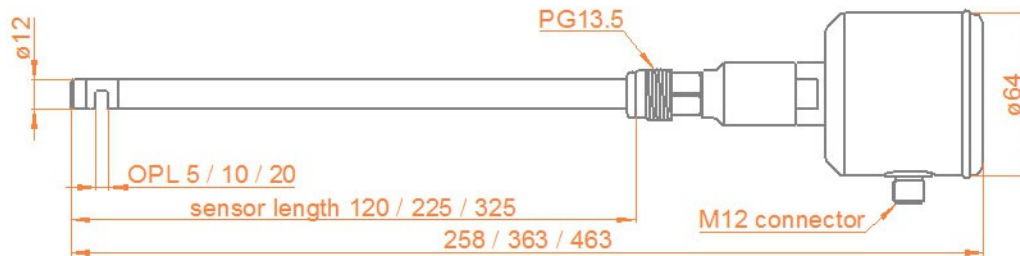
Specifications

| | |
|---------------------|--|
| Measuring range | 0...3AU, 0...6OD 0...3250EBC, 0...13000FAU |
| Wave length | 880 nm |
| Light source | LED |
| Optical path length | 5mm |
| Sensor length | 120mm / 225mm / 325mm |
| Material | stainless steel 1.4435 (316L) |
| Surface | electro-polished < Ra 0,37µm |
| Windows | Sapphire |
| Power supply | 24VDC |
| Analogue output | 4...20mA |
| Switching output | NO or NC 150mA |
| Cable connection | M12 plug, 5-pin |
| Cable length | 2m, 5m oder 10m |
| Process connection | G ½" for welding socket |
| Process temperature | 0...90 °C, 140 °C max. 2h (SIP-cycle) |
| Process pressure | max. 10 bar (150 psig) @ 60°C |

Typical Measurements



EXspect 260 NIR Turbidity Sensor 180° for holders



Ordercode

| Code | Material | Delivery |
|------|-------------------------------|----------|
| 4435 | Stainless steel 1.4435 (316L) | 3 weeks |

| Code | Sensor length | Delivery |
|------|---------------|----------|
| 120 | 120mm | 3 weeks |
| 225 | 225mm | 3 weeks |
| 325 | 325mm | 3 weeks |

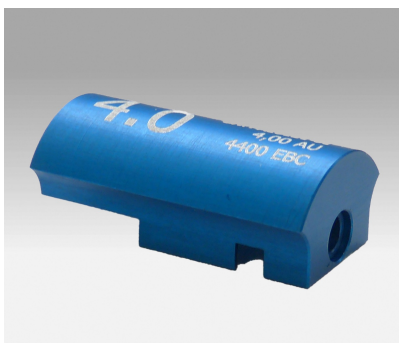
| Code | Optical path length | Delivery |
|------|---------------------|----------|
| 05 | 5mm | 3 weeks |

| Code | Process Connection | Delivery |
|------|--------------------|----------|
| PG1 | Thread PG 13.5 | 3 weeks |

| Code | Electrical connection | Delivery |
|------|-----------------------|----------|
| M12 | M12 plug, 5-pin | 3 weeks |

| Code | Display | Delivery |
|------|-------------------------|----------|
| 0 | without display | 3 weeks |
| 1 | with integrated display | 3 weeks |

Accessories



Optical reference filter to verify or calibrate EXcell- or EXspect sensors



EXcap 110 - set of optical reference filters



EXspect 240/260 along with retractable holder EXtract 810