

## EXtract 821 plastics, extended immersion



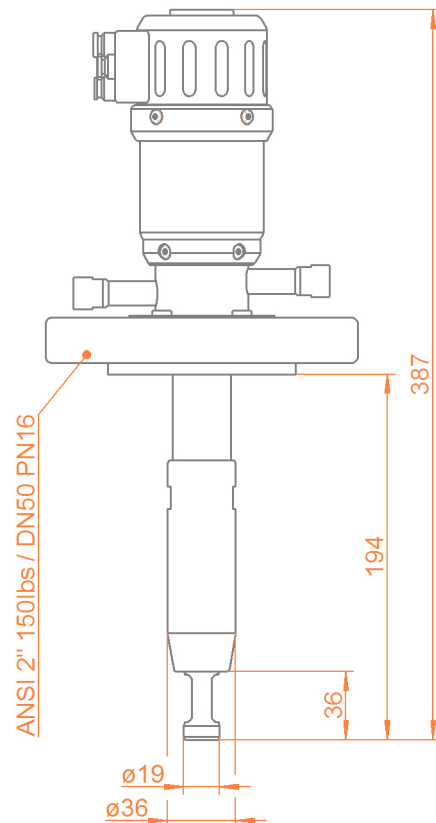
- › Robust design, integrated scraper
- › Extension of sensor-lifetime and reducing of maintenance efforts
- › Automatic safety lock while sensor is removed
- › Plug and play installation, colour- and size-coded connection system
- › Integrated limit switches
- › Usable in ATEX-areas
- › PVDF, PEEK

EXtract 821 is a retractable holder made of plastics for installation of  $\varnothing$ 12-325mm sensors on tanks or pipelines with an extended immersion length up to 194mm

### Specifications

Process pressure	0...10bar
Process temperature	-10...140°C
Ambient temperature	-10...70°C
Immersion length	up to 194mm
Sensors	$\varnothing$ 12-325mm PG 13.5
Materials	PVDF / Alloy C22, PEEK
Sealings	EPDM, FPM (Viton), FFKM (Kalrez)
Process connection	Flange DN50 PN16 / DN40 PN16 / ANSI 2" 150lbs / ANSI 1 1/2" 150lbs
Cleaning ports	G1/8", G1/4", FNPT 1/4"
Power	compressed air 4..6 bar
Limit switches	pneumatic, integrated

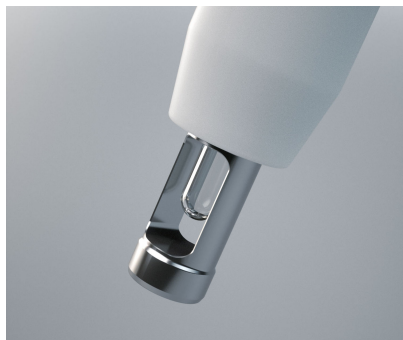
### Dimensions



### Certificates



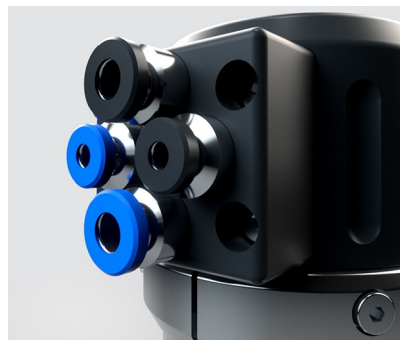
## EXtract 821 plastics, extended immersion



Protective cage with sensor in measuring position



Usable for industrial applications



Connection board EXtract

### Ordercode

Code	Material (wetted parts)	Delivery
PVDF	PVDF	2 weeks
PEEK	PEEK	4 weeks

Code	Sealing Material (wetted sealings)	Delivery
EPD	EPDM/FDA/USP VI	2 weeks
FPM	FPM (Viton)	2 weeks
FKM	FFKM (Kalrez)	3 weeks

Code	Sensor type	Delivery
325	325mm PG 13,5 gel-filled	2 weeks
380	380mm PG 13,5 liquid filled	2 weeks

Code	Process Connection	Delivery
D50	Flange DN50 PN16	2 weeks
A20	Flange ANSI 2" 150lbs	2 weeks

Code	Cleaning Connection	Delivery
G18	G 1/8" female thread	2 weeks
G14	G 1/4" female thread	2 weeks
N14	1/4" NPT female thread	2 weeks

Code	Position switch	Delivery
PN	pneumatic	2 weeks