

EXpure 191 NIR 90°-scattered light sensor



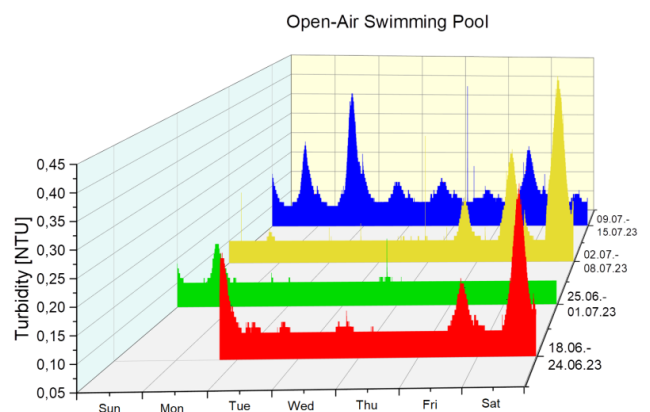
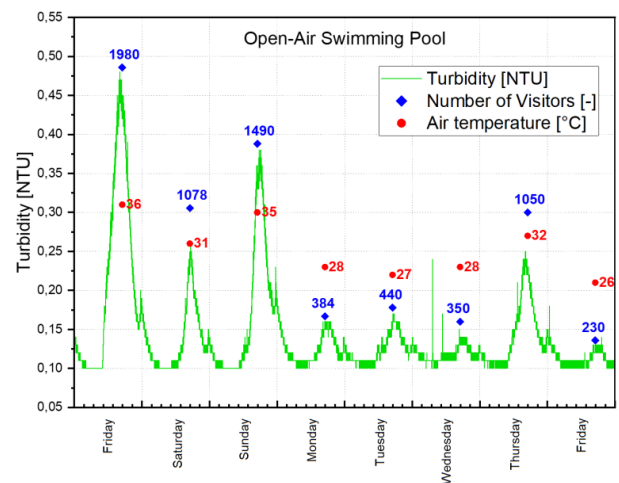
- » Compact design with integrated amplifier
- » Nephelometric measurement according to DIN EN 27027 and ISO 7027
- » Durable sapphire windows
- » Modbus communication or 0/4...20 mA
- » LED light source guarantees a durable and stable signal
- » Easy parameterisation via software EXpert
- » No calibration necessary by the user

EXpure 191 is a highly accurate compact NIR turbidity sensor for monitoring processes with very low turbidities, e.g. in water applications. It is well suited for swimming pool applications, as well as some special measuring points in the area of drinking water.

Specifications

Measuring range max.:	0...10 NTU
Resolution:	0,01 NTU
Accuracy:	± 1 % from final value
Reproducibility:	≤ 1 % from final value
Light source:	LED
Optical unit:	Stainless steel (1.4435)
Windows:	Sapphire
Sealing:	EPDM
Flow-through cell:	Plastic (PE-HD black)
Supply voltage:	24 V DC
Process connection:	Thread G1/4"
Process temperature:	1...50 °C
Process pressure:	0...6 bar
Electrical connection:	Connector 8-pin (IP68K)
Interfaces:	RS485 Modbus, 0/4...20 mA
Parameterisation:	Software EXpert
Flow rate:	30...80 l/h
Protection class:	IP65

Typical Measurements



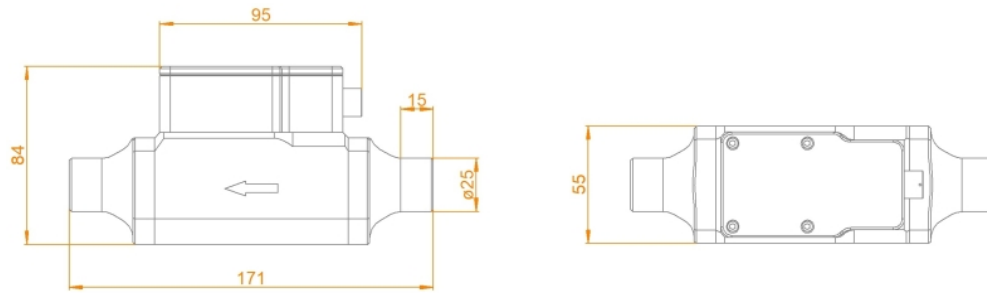
Contact:



www.southforkinstruments.com

Tel: 925 461 5059

EXpure 191 NIR 90°-scattered light sensor



Order code

Code	Measuring range	Delivery time
A	0...10 NTU	3 Weeks
Code	Material (wetted parts)	Delivery time
1	PE-HD / Stainless steel 1.4435 (316L)	3 Weeks
Code	Design / Nominal size	Delivery time
F32	Flow-through cell DN32 (1 1/4")	3 Weeks
Code	Process connection	Delivery time
G14	G1/4" female thread	3 Weeks
Code	Parameterisation	Delivery time
00	Standard	3 Weeks
Code	Interface	Delivery time
D0	Modbus RTU (RS485)	3 Weeks
DA	Modbus RTU (RS485) / Analogue 4...20 mA	3 Weeks