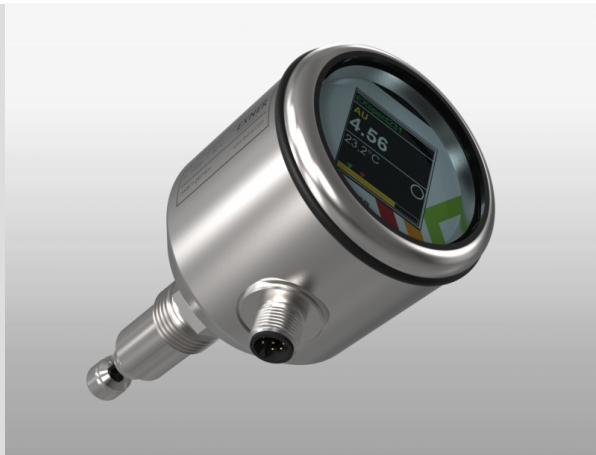


EXspect 231 NIR absorption sensor in compact design



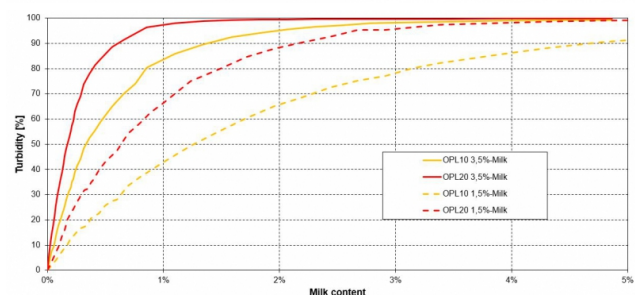
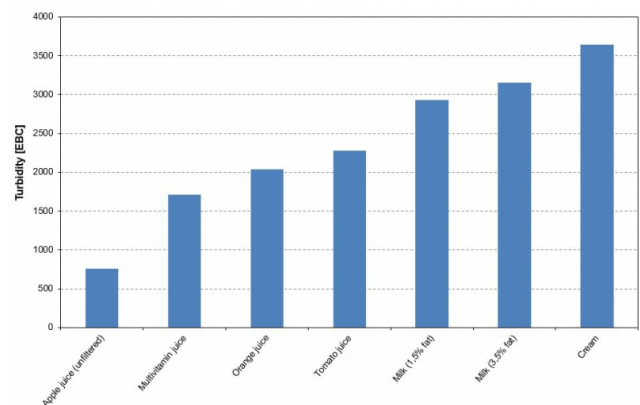
- » Compact design with integrated amplifier and touch display
- » %-turbidity / EBC, FAU / mg/l / AU / OD or customer defined unit
- » Durable sapphire window
- » Hygienic Design, CIP/SIP-capable
- » LED light source guarantees a durable and stable signal
- » Easy parameterization via display or software EXpert

EXspect 231 is a high-precision NIR compact sensor for monitoring production processes in the food and pharmaceutical industries as well as in many areas of further process applications, which can be optimally adapted to the respective measuring task

Specifications

Measuring range max.:	0-100 % / 0...6 AU / 0...6600 EBC
Resolution:	0,1 % or 0,01 AU
Accuracy:	± 1 % from measurement value
Reproducibility:	≤ 1 % from final value
Wavelength:	850 nm
Light source:	LED
Optical path length:	5, 10 or 20 mm
Material:	Stainless steel 1.4435 (316L)
Surface:	e-polished Ra <0,37 µm
Window:	Sapphire
Supply voltage:	24 V DC
Contact:	NO or NC configurable 150 mA
Input contact:	zeroing
Process connection:	Thread G1/2"
Process temperature:	-10... 90 °C, 135 °C max. 1 hour (SIP cycle)
Process pressure:	max. 10 bar (150 psi)
Electrical connection:	M12 connector 5-pin or 8-pin (digital parameterizable)
Interfaces:	4 ... 20 mA
Parameterization:	Software EXpert
Protection class:	IP69

Typical Measurements



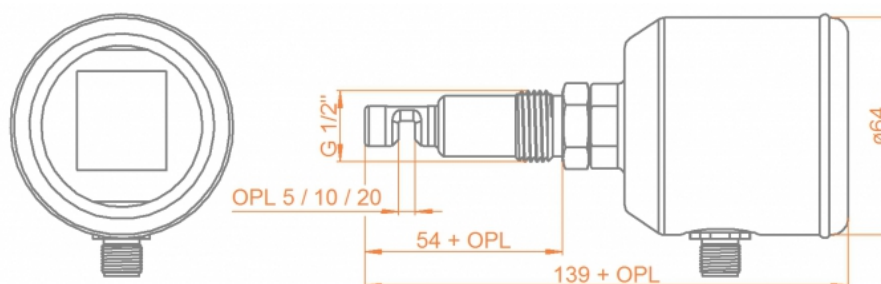
Contact:



www.southforkinstruments.com

Tel: 925 461 5059

EXspect 231 NIR absorption sensor in compact design



Order code

Code	Measuring range	Delivery time
A	0...100% turbidity	3 Weeks
B	0...3,5 AU / 0...3850 EBC / 0...7 OD	3 Weeks
C	0...6 AU / 0...6600 EBC / 0...12 OD	3 Weeks

Code	Optical path length	Delivery time
05	5 mm	3 Weeks
10	10 mm	3 Weeks
20	20 mm	3 Weeks

Code	Material (wetted parts)	Delivery time
4435	Stainless steel 1.4435 / 316L	3 Weeks

Code	Sealing material (wetted sealings)	Delivery time
MET	Metal sealing (without elastomer)	3 Weeks

Code	Process connection	Delivery time
G12	Thread G1/2"	3 Weeks

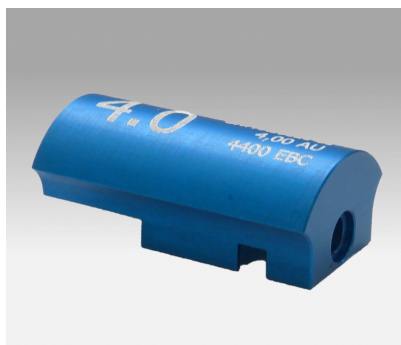
Code	Interface	Delivery time
AS	Analogue 4...20 mA / M12 5-pin	3 Weeks
AD	Analogue 4...20 mA / digitally parameterizable / M12 8-pin	3 Weeks

Code	Display	Delivery time
1	With integrated display	3 Weeks

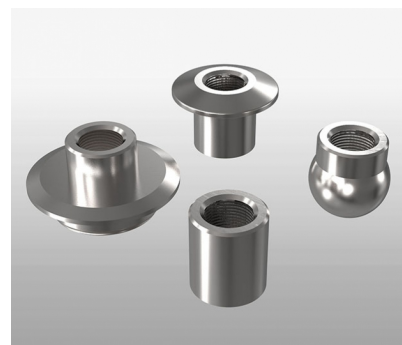
Accessories



EXcap 110 - set of optical reference filters



Optical reference filter to verify or calibrate EXcell- or EXspect sensors



Weld-in socket and process adapters