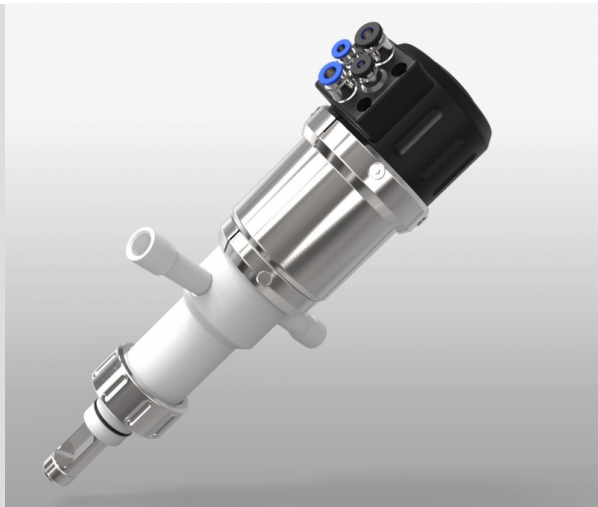


## EXtract 825 plastic for welding socket DN25



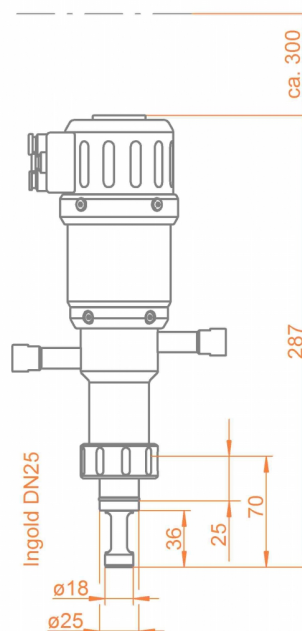
- » Robust design, integrated PTFE scraper
- » Usable for DN25 welding socket
- » Extension of sensor-lifetime and reducing of maintenance efforts
- » Automatic safety lock while sensor is removed
- » Usable in ATEX-areas
- » Immersion length 70mm
- » Up to 10 bar and 140 °C

EXtract 825 is a pneumatically operated retractable probe housing made of plastics accommodating Ø12mm process sensors for installation on welding sockets DN25 / G1 1/4" with integrated PTFE scraper for rougher processes.

### Specifications

Process pressure:	0...10 bar
Process temperature:	-10...140 °C
Ambient temperature:	-10...70 °C
Immersion length:	70 mm
O-ring position:	25 mm
Sensors:	225mm Ø12 PG 13.5
Materials:	PP, PVDF, PEEK
Sealings:	EPDM, FPM (Viton), FFKM (Kalrez)
Process connection:	G1 1/4" (DN25)
Cleaning ports:	G1/8", G1/4", FNPT1/4"
Operating power:	compressed air 4..6 bar
Limit switches:	pneumatic, integrated

### Dimensions



Contact:



[www.southforkinstruments.com](http://www.southforkinstruments.com)

Tel: 925 461 5059

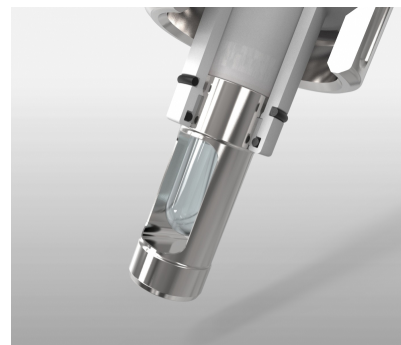
## EXtract 825 plastic for welding socket DN25



Protective cage with sensor in measuring position



Connection board EXtract - pneumatic connections



Sealing system of the EXtract825 with the reliable PTFE scraper

### Order code

Code	Material (wetted parts)	Delivery time
PP	PP	2 Weeks
PVDF	PVDF	2 Weeks
PEEK	PEEK	2 Weeks
Code	Sealing material (wetted sealings)	Delivery time
EPD	EPDM/FDA/USP VI	2 Weeks
FPM	FPM (Viton)	2 Weeks
FKM	FFKM (Kalrez)	3 Weeks
Code	Sensor type	Delivery time
225	225mm PG 13,5 gel-filled	2 Weeks
280	280mm PG 13,5 liquid filled	2 Weeks
Code	Process connection	Delivery time
IN25	G1 1/4" (DN25) O-ring-position 25mm	2 Weeks
Code	Cleaning connection	Delivery time
G18	G 1/8" female thread	2 Weeks
G14	G 1/4" female thread	2 Weeks
N14	1/4" NPT female thread	2 Weeks
Code	Position switch	Delivery time
PN	pneumatic	2 Weeks